
RECORDING GUIDELINES

All auditions should be submitted digitally with an accompanying availability form via the Blue Ridge Orchestra web form found at blueridgeorchestra.org/submit-audition

FILE FORMAT: Please use a common audio file format.

SEPARATE FILES: Please record and upload each item separately.

FILE NAMES: Each recording should have a descriptive file name comprising the piece played and the auditioner's last name, e.g. Scale1Jones, Scale2Jones, ExcerptJones, etc.

LISTEN! Before submitting, listen to your recordings all the way through, paying attention to the quality of the finished recording for audio level and the balance with the metronome. Choose a space with good acoustics (not too live); minimize ambient noise (street noise, fans, air conditioners, etc.); avoid speaking during the recordings.

If you have technical difficulties or are unable to submit online, contact us at auditions @ [blueridgeorchestra.org](mailto:auditions@blueridgeorchestra.org).

PLEASE NOTE

This packet contains audition materials for both TENOR TROMBONE and BASS TROMBONE. Please record the appropriate repertoire for your instrument.



TENOR TROMBONE AUDITION PG 1

SCALE 1

The metronome should be set at quarter note = 120bpm, and must be clearly audible on your recording.

SCALE 2

The metronome should be set at quarter note = 72bpm, and must be clearly audible on your recording.

SCALE 3

The metronome should be set at dotted quarter note = 80-100bpm, and must be clearly audible on your recording.



TENOR TROMBONE AUDITION PG 2

1. Excerpt from Morceau Symphonique by Alexander Guillmant

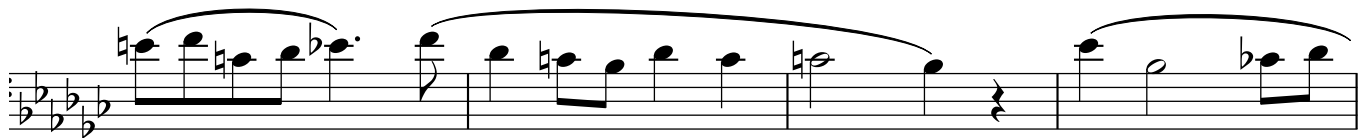
Record this excerpt on Track 4. Do not use a metronome on your recording.

Andante Sostenuto ♩ = 63



mp Con Expressione

cresc



dim.

p



2 Excerpt from movement 3 of Trombone Concerto by Launy Grondahl

Record this excerpt on Track 5. Do not use a metronome on your recording.

Allegretto scherzando ♩ = 80



mf



cresc



BASS TROMBONE AUDITION PG 1

SCALE 1

The metronome should be set at quarter note = 120bpm, and must be clearly audible on your recording.

Musical notation for Scale 1, Bass Clef, 4/4 time, key signature of two flats (B-flat major). The scale consists of two lines of music. The first line contains the ascending scale: B-flat, C, D, E-flat, F, G, A, B-flat. The second line contains the descending scale: A, G, F, E-flat, D, C, B-flat, A. The final note is a whole note B-flat.

SCALE 2

The metronome should be set at quarter note = 72bpm, and must be clearly audible on your recording

Musical notation for Scale 2, Bass Clef, 4/4 time, key signature of two flats (B-flat major). The scale consists of two lines of music. The first line contains the ascending scale: B-flat, C, D, E-flat, F, G, A, B-flat. The second line contains the descending scale: A, G, F, E-flat, D, C, B-flat, A. The final note is a whole note B-flat.

SCALE 3

The metronome should be set at dotted quarter note = 80-100bpm, and must be clearly audible on your recording

Musical notation for Scale 3, Bass Clef, 6/8 time, key signature of two flats (B-flat major). The scale consists of four lines of music. The first line contains the ascending scale: B-flat, C, D, E-flat, F, G, A, B-flat. The second line contains the descending scale: A, G, F, E-flat, D, C, B-flat, A. The final note is a dotted quarter note B-flat.



BASS TROMBONE AUDITION PG 2

1 Excerpt based on Bordogni Melodious Etude No. 53. The slur lines indicate phrase lengths rather than strict slurs, but a legato articulation is recommended to capture the cantabile quality of this excerpt. Record this excerpt on Track 4. Do not use a metronome on the recording.

Andante Con Moto ♩ = 76

mf dolce espressivo *f* *mp*

2. Excerpt based on Marcello Sonata No 6 for Double Bass, 4th movement. Record this excerpt on Track 5. Do not use a metronome on the recording.

Allegro et sempre poco staccato ♩ = 144

f *p* *poco rit.....*